

# Quality IPECP

## Definitions and Guidance



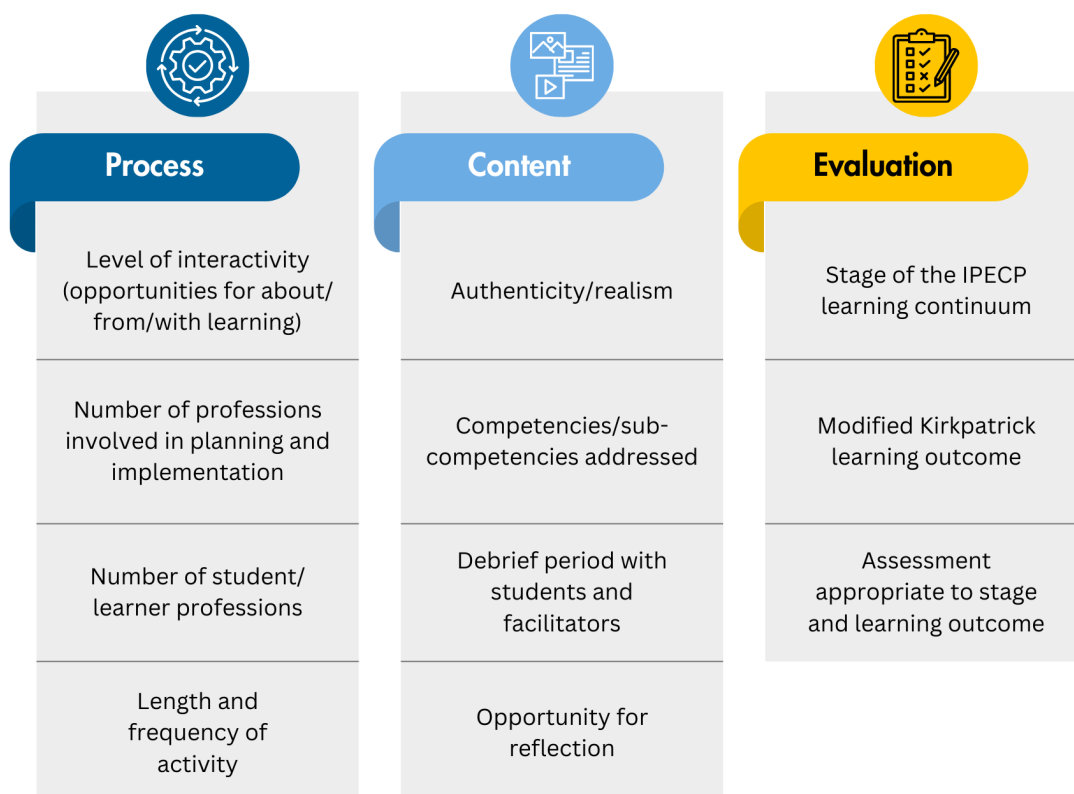
## What Characterizes Quality IPECP?

Quality Interprofessional Practice and Education (**IPE**) or Quality Interprofessional Education for Collaborative Practice (**IPECP**) (the two are often used interchangeably):

- Is intentional.
- Is longitudinal, covering the Exposure, Immersion, and Entry-to-Practice stages of the IPECP Learning Continuum.
- Requires about/from/with planning and learning.
- Embeds and features the IPEC Competencies.

## Academic Affairs Council for Interprofessional Practice and Education

A review of IPECP programs at numerous institutions identified 11 characteristics of Quality IPECP that can be divided into three categories.



## Criteria for Quality IPECP at the University

### Process

1. Two or more professions involved in activity planning and implementation.
2. Learners from two or more professions participate in the activity.
3. Interactivity and about/from/with learning prominently featured (e.g., discussion, roleplay, simulation, interprofessional guided shadowing, etc.).
4. Length and frequency of activity specified, including number of learner interactions (onetime only, part of a sequence, part of a curriculum, etc.)

### Content

1. An authentic and realistic IPECP experience with explicit interprofessional learning, including clear communication of interprofessional learning objectives.
2. At least two of the four IPEC Core Competencies addressed, and the targeted sub-competencies specified.
3. Inclusion of a structured debriefing that includes the interprofessional experience.
4. Opportunity(ies) for learner reflection (small group discussion, structured reflection paper, etc.)

## **Academic Affairs Council for Interprofessional Practice and Education**

### **Evaluation**

1. Specification of IPECP learning continuum stage (please see the IPECP Clearinghouse on Blackboard)
2. Specification of Modified Kirkpatrick learning outcome level (please see the IPECP Clearinghouse on Blackboard)
3. Selection of assessment approach and tool(s) appropriate to stage and outcome level

### **Questions?**

Please contact your program's [IPE Council member](#).